

We thank you for purchasing an
ELITE TUBULAR SKYLIGHT

This product has a **LIMITED LIFETIME WARRANTY** on all components against manufacturer defects, corrosion, rust, and deteriorations.

IMPORTANT:

**PLEASE READ THE ENTIRE INSTALLATION GUIDE
PRIOR TO COMMENCING.**

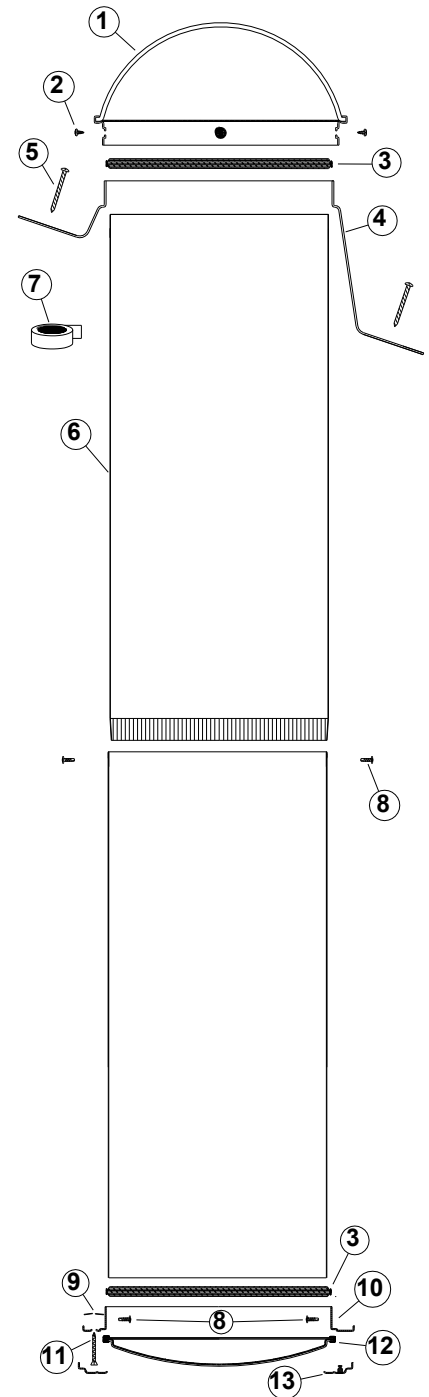
TAKE SAFETY PRECAUTIONS WHEN WALKING ON THE ROOF.

DO NOT REMOVE LIGHT TUBE FILM UNTIL INSTRUCTED.

Tools Needed:

- Claw Hammer
- Pry Bar
- Plumb
- Tool/Laser
- Jigsaw
- Drill & Bits
- Screwdrivers
- Caulking Gun
- Drywall Saw
- Tin Nips

<u>Item</u>	<u>Description</u>
1	Dome Assembly & Dome Scatter Disk
2	No. 8 x 3/8" Stainless Steel Dome Screws
3	Weather Dust Seal (2 PCS)
4	Roof Flashing (Seamless Aluminum)
5	No. 8 x 2" Stainless Steel Flashing Screws
6	Light Tubes and/or Elbows
7	Aluminum Foil Tape
8	No. 8x 1/2" Self-drill Sheet Metal Light Tube/Elbow Screws
9	Flat Metal Nuts
10	Aluminum Trim Ring
11	No. 8 x 1 1/2" Sheet Metal Ceiling Kit Screws
12	Double Glaze Light Diffuser
13	White Ceiling Decorative Ring- Twist On-Off



STEP 1: Locate desired placement for your new Elite Tubular Skylight. Stick a wire (or coat hanger) through ceiling. Inside attic, locate wire. Displace insulation and drill a hole centered between two frame members. Drop a plumb line or a similar object to mark and drill a hole through roof (**Figure 1**).

STEP 2: On top of roof, locate pre-drilled hole. Using supplied roof template, mark circumference of hole for Flashing (**Item #4**). Cut hole with reciprocating saw (**Figure 2**).

***SEE PAGE 4 FOR INSTRUCTIONS ON FLAT OR TILE ROOF INSTALLATIONS.**

Figure 1

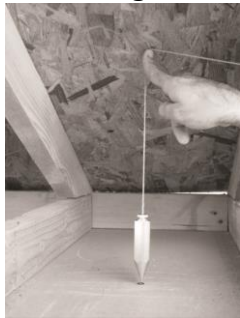


Figure 2



Figure 3



STEP 3: After cutting roof hole, cut two slits about 4" long each through roof material. Pull out nails or staples from center of hole enough to be able to slide up Flashing (**Item #4**) under Tar Paper. Apply bead of supplied Roof Caulking under flashing. Slide flashing under roof material and secure with No. 8 x 2" Stainless Steel Screws (**Item #5, Figure 3**). Apply dust seal (**Item #3**) to inside lip of flashing.

Figure 4



Figure 5



STEP 4: Back inside house, use supplied ceiling template to mark circumference of hole for Trim Ring (**Item #10**). Cut hole using a Drywall Saw. Fasten Trim Ring to ceiling by using the provided #8 x 1 1/2" philips sheet metal screw (**Item #11**) through the pre-drilled hole into the drywall and into the flat metal nuts (**Item #9**). **DO NOT OVER TIGHTEN (Figure 4)**. Apply Dust Seal (**Item #3**) inside flange of Trim Ring. Dust Seal will help keep dust and bugs out of skylight.

STEP 5: Determine length of Light Tube needed (**Item #6**). Place each Light Tube together and pull protective film off of Light Tube about 2 inches away from edge where adhesive will make contact. Remove adhesive backing and overlap at off-set. Press together and fasten with a No.8 x 1/2" Self-Drill Sheet Metal Screw (**Item #8**) at center of each Light Tube. Pull protective film down about 2 inches and insert one Light Tube on top of other (as many as needed). Secure with 3 or more No.8 by 1/2" Self-Drill Sheet Metal Screws (**Item #8, Figure 5**). Use Aluminum Foil Tape (**Item #7**) along and around Light Tube joints to seal completely. When installing Elbows, use similar steps as with Light Tube. Once the Elbow angle is set, use Aluminum Foil Tape (**Item#7**) to cover Elbow seams.

STEP 6: Once Light Tubes are put together; these can be installed from roof. Crimped side should go in first for easier install. Elbows can be used for obstructed attics.

STEP 7: Bring Light Tube down flushed to Trim Ring. Do not go lower; can be 1/4" higher from Trim Ring. Fasten Light Tube to Trim Ring with 3 or more No.8 x 1/2" Self-Drill Sheet Metal Screws (**Item #8**). **DO NOT OVER TIGHTEN (Figure 6)**. Keep Light Tube as round as possible against Dust Seal.

Figure 6



Figure 7



STEP 8: On roof, trim Light Tube (if necessary). Flush with top of Flashing using Tin Snips (**Figure 7**). Or score outside of Light Tube with a utility knife at top level of Flashing and push against it to cut.

Figure 8



Figure 9



STEP 9: Remove protective film from Light Tube and install Dome Assembly & Scatter Disk (**Item # 1**). Secure to Flashing with No.8 x 3/8" Stainless Steel Screws (**Item # 2, Figure 8**). **IMPORTANT: Do not apply ANY silicone around Dome Assembly for it can create and keep condensation inside skylight.** Finish roof installation by sealing around Flashing and gluing any loose shingles with supplied Roof Caulking.

STEP 10: Finally, remove any protective film from inside Light Tube and install White Ceiling Deco-Ring (**Item # 13**) with Light Diffuser (**Item # 12**). Install by aligning stand offs with keyholes and twist right (clockwise) until ring stops (**Figure 9**). **If Ceiling-Deco Ring ever needs to be removed for cleaning, twist left (counterclockwise), remove, clean and install back to original position.**

FOR COLD CLIMATES

It is recommended to seal gap between Light Tube and Flashing with Aluminum Foil Tape, this will prevent any air coming up into the Dome Assembly from inside home. Inside attic, seal gap between trim ring and drywall, using insulating foam sealant. (not included)

ENJOY THE GREATEST LIGHTING SOURCE WITH THE ELITE TUBULAR SKYLIGHT

****REMINDER: FOR BEST RESULTS, DO NOT FORGET TO REMOVE PROTECTIVE FILM FROM INSIDE LIGHT TUBES. MAKE SURE TO SEAL AND GLUE LOOSE SHINGLES ALL AROUND FLASHING WITH SUPPLIED HIGH QUALITY ROOF CAULKING****

• MADE IN USA • ICC-ES 1761 • HURRICANE TESTED & APPROVED •

INSTRUCTIONS FOR FLAT ROOF INSTALLATIONS

STEP 1: Locate desired placement for your new Elite Tubular Skylight. If building does not have an attic and if ceiling joists can not be seen, use a stud finder or tap lightly to find approximate center point between two joists. Drill hole through ceiling and roof walls using a long drill.

STEP 2: On roof, locate pre-drilled hole. Use supplied roof template to mark circumference of hole for Flashing. Cut hole (**DO NOT CUT ANY FRAME MEMBERS**). Apply two ½" thick beads of High-Quality Roof Caulking (supplied) on under side of Flashing. Secure to roof using No.8 x 2" or longer Stainless-Steel Screws (**Item # 5, Figure 10**).

Figure 10



Figure 11



STEP 3: Apply a 4" wide reinforcement fabric around perimeter of Flashing and High-Quality Roofing Mastic (not supplied) to double seal any potential water leakage (**Figure 11**). To complete installation, follow **STEPS 4** through **10**, same as for shingle roofs.

INSTRUCTIONS FOR TILE ROOF INSTALLATIONS

STEP 1: Follow **STEP 1** as for shingle roofs.

STEP 2: On top of roof, remove several tiles around pre-drilled hole. Use roof template to mark circumference of hole for Flashing and cut hole (**Figure 12**). Cut two 4" slits at center or lower sides of hole to slide Flashing under Black Tar Paper or apply two ½" beads of High-Quality Roof Caulking (supplied) on under side of Flashing. Place Flashing centered with hole and secure to roof using No.8 x 2" Stainless Steel Screws (**Item # 5**).

STEP 3: Replace tiles at lower side of Flashing. Place Aluminum Skirt with EPDM Rubber (supplied for tile roofs) over Flashing as shown (**Figure 13**) and fold side edges up. Adjust Aluminum Skirt to fit profile of tiles. Cut rest of tiles to fit around Flashing as needed and apply roof caulking wherever may be needed. (**DO NOT PUSH ALUMINUM SKIRT ALL THE WAY DOWN TO BASE OF ALUMINUM FLASHING**)

Figure 12



Figure 13



Figure 14



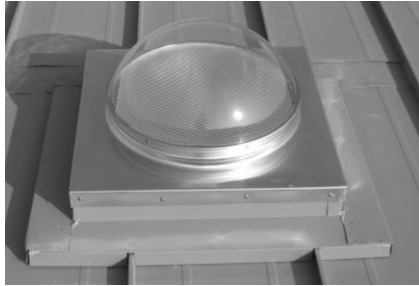
STEP 4: Apply Roof Caulking at any gaps created between aluminum and EPDM Rubber while contouring Aluminum Skirt to tiles (**Figure 14**). Paint to match color of roof. To complete installation, follow **STEPS 4** through **10**, same as for shingle roofs.

INSTRUCTIONS FOR SQUARE CURB INSTALLATIONS

STEP 1: To install a Square Curb Flashing, there should already be a Square Curb built up on the roof. Make sure inside dimensions of Roof Flashing are the same as the outside dimensions of the Square Curb.

STEP 2: Apply High Quality Roof Caulking (supplied) to top edge of Square Curb.

STEP 3: Install Roof Flashing on top of square curb and secure using No.8 x 2" or longer Stainless-Steel Screws.



**** Examples of installed Curb Flashing.**

To complete installation, follow **STEPS 4** through **10**, same as for shingle roofs.

OUR PRODUCT HAS A LIMITED LIFETIME WARRANTY

IF ANY QUESTIONS OR PROBLEMS SHALL ARISE, PLEASE FEEL FREE TO CONTACT US AT ELITEDAYLIGHTSYSTEMS.COM OR CALL 866-772-5418

AGAIN, WE THANK YOU FOR CHOOSING

ELITE DAYLIGHT SYSTEMS

YOUR DAYLIGHTING & VENTILATION SOLUTION



Made in U.S.A.

• MADE IN USA • ICC-ES 1761 • HURRICANE TESTED & APPROVED •