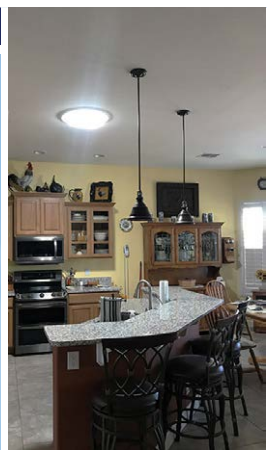




Ideal for

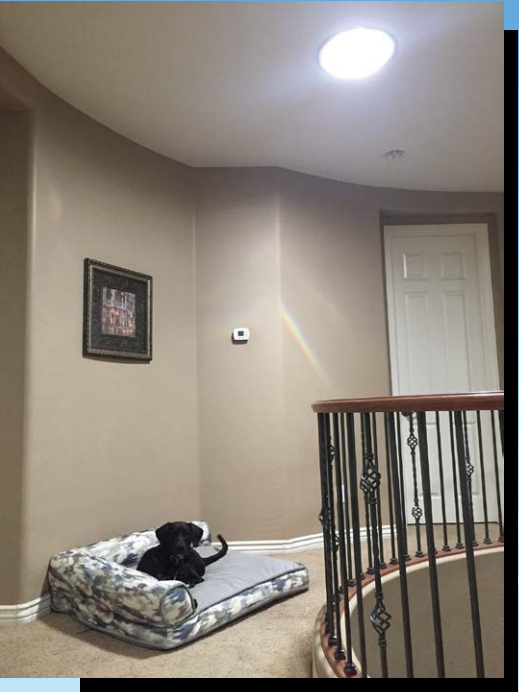
- Bathrooms
- Living Rooms
- Dining Rooms
- Laundry Rooms
- Home Offices
- Entryways
- Hallways
- Closets
- Garages
- Sheds
- Dog Houses
- And more



Benefits

- Brighten dark and dimly lit rooms with energy saving daylight.
- Change the atmosphere of any living space by adding comfort and tranquility.
- Minimize the use of artificial lighting therefore reducing eye strain and headaches.
- Connects a living space to the outdoors which improves mood and increases concentration.
- Encourages the production of Vitamin D .

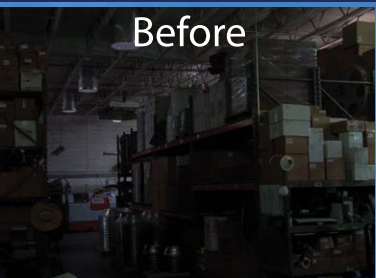
Model Size	Coverage Area	Wattage Output Equivalent
6"	Covers up to 100 sq ft	Up to 200W/1875 Lumens
10"	Covers up to 150 sq ft	Up to 300W/3750 Lumens
13"	Covers 150 up to 250 sq ft	Up to 500W/6500 Lumens
18"	Covers 300 up to 500 sq ft	Up to 1000W/11000 Lumens



The health benefits of an Elite Tubular Skylight can be enjoyed by both your family and your pets.

Natural light improves your pets mood and temperament. As pet owners we often forget about our pets need for natural sunlight.

COMMERCIAL



Before

21", 24" & 32" sizes available for commercial & industrial applications.



After

- Warehouses
- Offices
- Retail Stores
- Schools
- Hospitals
- Restaurants
- And more

AUTHORIZED DEALER

Elite Tubular Skylights can be purchased and installed by an Authorized Elite Dealer near you, visit
www.elitesolarsystems.com

CREDENTIALS

- MADE IN USA
- 25 YEAR WARRANTY
- HURRICANE TESTED & APPROVED
- ENERGY STAR MODELS AVAILABLE
- CHECK FOR AVAILABLE FEDERAL/STATE TAX CREDITS WITH A TAX PROFESSIONAL



Manufactured by:

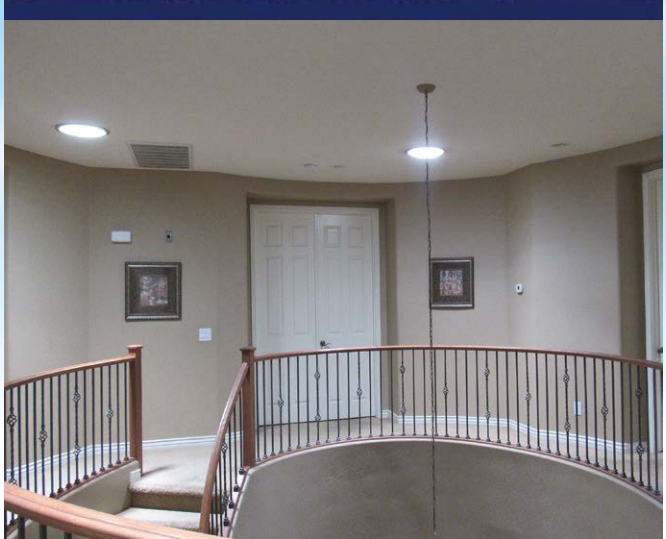
Elite Solar Systems, Inc.
310 E. Comstock Dr., Chandler, AZ 85225
Phone: (480) 635-9748 Fax: (480) 635-9767
Toll free: (866) 772-5418
Email: info@elitesolarsystems.com
www.elitesolarsystems.com

Visit our sister company www.SouthwestMetalSpinning.com



Your Daylighting and Ventilation Solution

Residential Tubular Skylights



Tubular Skylight Components



Quality

- A 100% high impact acrylic dome that is hurricane tested and approved.
- Three layers of UV protection against fading of home interiors.
- Rust proof, strong and durable 1100-O aluminum components.
- A unique one piece seamless flashing for additional protection against leaks.
- A 98% reflective light tube to maximize daylighting output.
- Anodized aluminum light tubes proven not to peel and crack.
- Minimal heat gain, comparable or less than a standard light fixture.

FLASHING OPTIONS

Pitched Flashing



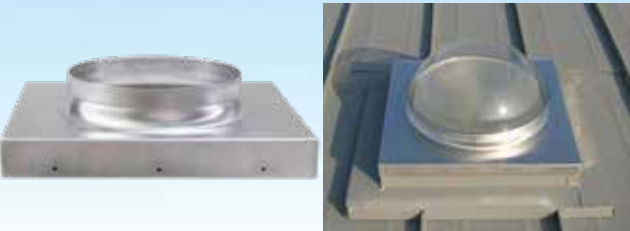
For tile, shingle, shake and metal roofs with a pitch of 3-5/12 or 14-23 degrees.

Flat Flashing



For flat and metal roofs with a pitch of 0-2/12 or 0-9 degrees.

Curb Flashing

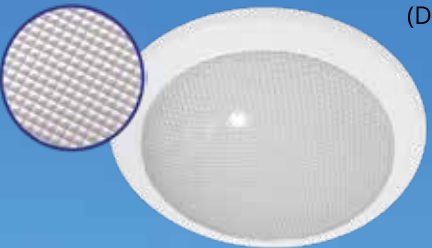


For roofs with built up curbs or used to replace traditional skylights.

DIFFUSER OPTIONS

Prismatic Diffuser

(Domed or Flat)



Provides even and broad light distribution becoming our most popular light diffuser option.

MaxLum Diffuser

(Domed or Flat)



Provides intense and concentrated light distribution for ceilings of 12 feet or higher.

White Diffuser

(Domed or Flat)



Provides softened and relaxed light distribution for a modern style and frosted glass appearance.

OPTIONAL ACCESSORIES



Flashing Extensions

Extends the dome above common roof top obstructions: tall s-style tiles, accumulated snowfall and roof vents.



Aluminum Skirt

Protects against leaks and highly recommended for tile roofs.



Bathroom Exhaust Vent

Space saving all-in-one tubular skylight / exhaust vent available for 10" units with 2 motor options of 80 or 150 CFM.



Adjustable Elbows

30°/45°
Allows the capability to maneuver around objects in attic.



Dimmer

Adjusts the intensity of daylight entering the home making it ideal for bedrooms & TV rooms.



Light Kit

Replaces or creates an electric light fixture by a dual or single light bulb option.